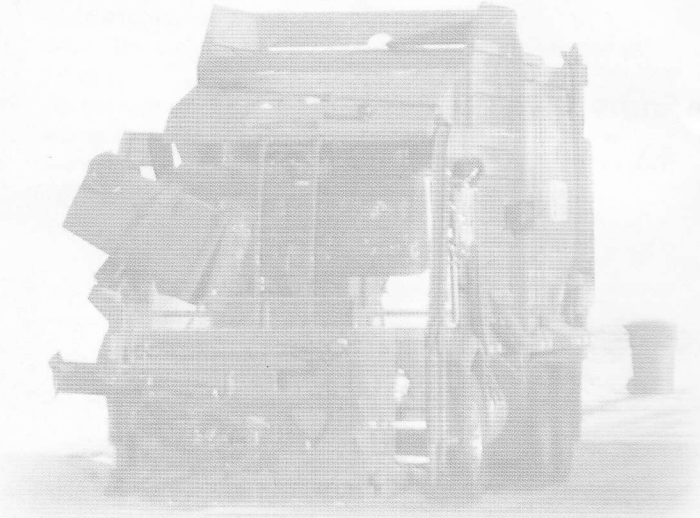




Loraas Disposal



Recycle your cardboard, newspaper and household tin cans at your Community's Recycle Depot, if provided.

Please help our recycling efforts by remembering to put designated material in the proper recycling compartments only. Please do not mix recyclables.

For additional information about appropriate materials or recycling, call our office during normal business hours:

Tel: (306) 242-2300 • Fax: (306) 242-4994

or

contact your Town or Village Office for further information

2614 Faithfull Avenue
Saskatoon Saskatchewan • S7K 5W3

Email: loraas@loraas.ca

or

Email: sales@loraas.ca

Saskatchewan Owned & Operated Since 1965

INDUSTRIAL • COMMERCIAL • RESIDENTIAL



Loraas Disposal

Introducing The Modern Waste Collection System



Saskatchewan Owned & Operated
Customer Satisfaction Guaranteed
Since 1965

Waste Collection

We hope that you will take a few moments to familiarize yourself with these easy to remember instructions regarding the automated refuse collection system.

This system uses the latest collection equipment available and provides maximum efficiency at minimum expense. We want to do the best possible job for you and would appreciate your cooperation.

To assure the collection of refuse, the drawings to the right illustrate the locations for your container on collection day.

Always have the wheels of the container facing toward the curb or edge of road as illustrated in drawing #1. When there is a snow bank built up along the curb, make sure the container is out further than the snow bank as illustrated in drawing #2. We ask that you refrain from parking on the street on collection day, however, if there are vehicles on the street, please place the container in the location illustrated in drawing #3 and #4.

If your house is on a street or avenue without a curb, please place the container on the road making sure the pickup truck can reach the container.

The container must be placed on the street or avenue that corresponds with your address. Example: 719 - 2nd Avenue West. This corner house would place the container on the Avenue.

For your child's safety, do not allow them to play near the collection containers or vehicles.

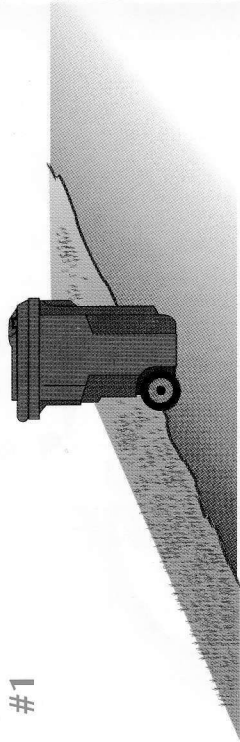
Containers placed roadside after 7:00 a.m. will be collected the following week.

Following these instructions will assist us in making your community one of the cleanest in Saskatchewan.

If you require more information, please call 1-306-242-2300 between 8:00 a.m. and 5:00 p.m., Monday through Friday.

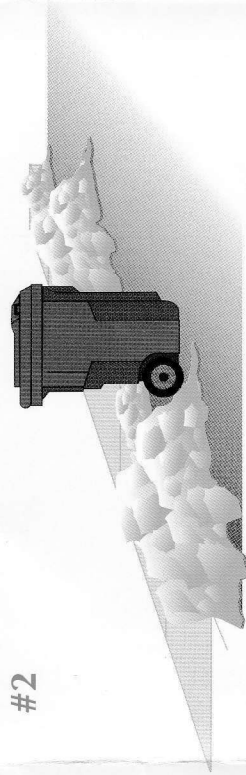
Ideal Location

#1



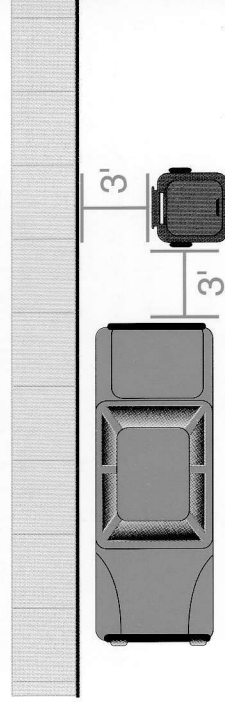
Snow Bank

#2



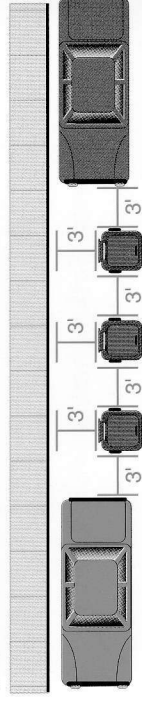
Close to a Parked Car

#3



Between Two Parked Cars

#4



General Guidelines on

How to use Your Container

1. Use your cart from now on to dispose of your bagged trash.
2. Wheel out your cart with its lid closed. You must be able to close the lid without packing garbage in the cart too tightly, otherwise the excess weight will make emptying of the cart more difficult.
3. Place the cart roadside by 7:00 a.m. on collection day, wheels facing towards the curb (illustration #1).
4. Return the emptied cart to your property before the end of the day.
5. Do not remove the cart from its assigned address.
6. Inform the town, village office or Loraas Disposal of any damage, vandalism or theft of the cart. It is important to note the serial number stamped on the cart placed at your residence.

Thank you for your cooperation in making this new, cleaner and more efficient system of waste collection work for you.

Do's & Don'ts for Cart Use

DO:

- Place the cart according to the illustrations in this brochure.
- Have your cart curbside by 7:00 a.m. on collection day.
- Pull the cart - it's easier than pushing.
- Keep the lid closed.
- Bag all trash and place inside the cart; bagged or unbagged trash left beside the cart will NOT be collected.
- Cut and bundle, or bag garden debris and place in cart.

DON'T:

- Overfill the cart, (keep lid closed).
- Pack trash too tightly.
- Paint or write on cart.
- Remove cart from your residence.

Items Not Allowed in or Near Carts

- hazardous waste including: paint, solvents, etc.
- sod, dirt or concrete
- ashes of any description
- construction or demolition materials including: boards, roofing materials, carpet, etc.
- automotive parts, oil filters, oil, etc.
- tree clippings over 2' in length
- liquids of any kind
- animals or animal parts